

上海恒光食品机械有限公司
Shanghai HG Food Machinery Co.,Ltd

Tel: 0086-21-57458832

Mob: 0086-15800718880

Fax: 0086-21-57456127

Email: info@hgmachinery.com

Website: www.hg-machine.com

Skype: hamasakiyumi

Add: No.1588, Hubin Road, Fengxian District, Shanghai, China

电话: 021-57451188

手机: 18616814322

传真: 021-57456127

邮箱: sales5@hgmachinery.com

网站: www.sh-hengguang.com

地址: 上海市奉贤区胡滨公路1588号

* The property right of pictures and words in this pamphlet belongs to Shanghai HG Food Machinery Co.,LTD. Without consent, no one can record or copy. Anyone who breaks it, HG owns the right to chase his legal responsibility.

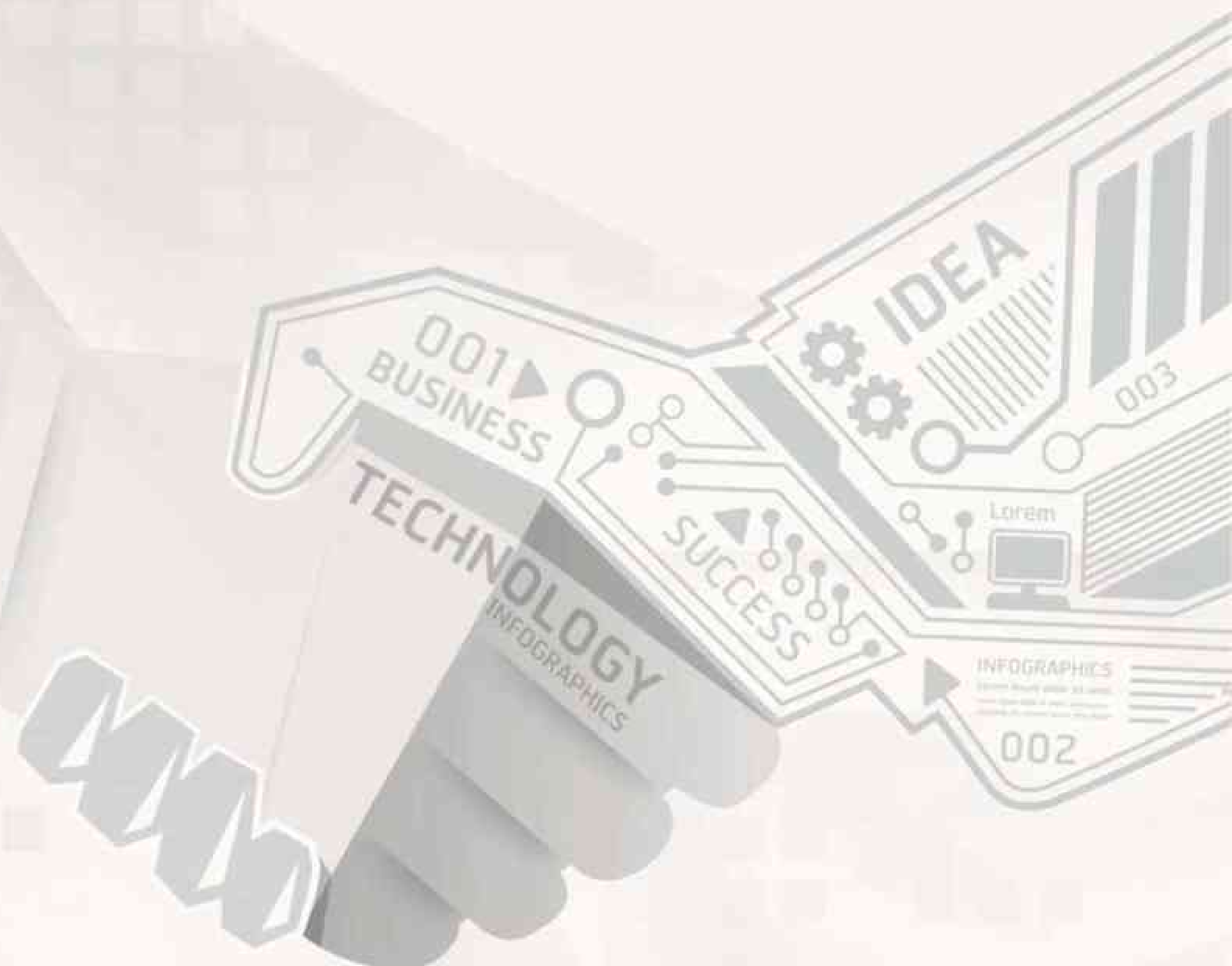
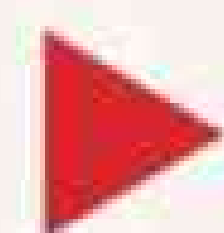


上海恒光食品机械有限公司
SHANGHAI HG FOOD MACHINERY CO.,LTD

professional food machinery manufacturer since 1975



Because committed to quality, So professional
Because focus on service, So to be the leader



Product Catalog

HG GROUP

- P 07-08 Full automatic Soft & Hard Biscuit Production Line
全自动酥/韧性饼干生产线
- P 09-10 Full automatic Custard/Cup Cake Production Line
全自动蛋黄派/纸杯蛋糕生产线
- P 11-12 Full automatic Swiss Roll & Layer cake Production Line
全自动瑞士卷/切块蛋糕生产线
- P 13-14 Full automatic Sandwich cake Production Line
全自动双片夹层蛋糕生产线
- P 15-16 Full-automatic Bear Cake Production Line
全自动小熊蛋糕生产线
- P 17-18 Full automatic Compound Potato Chips Production Line
全自动复合薯片生产线
- P 19-20 Naturl Potato Chips/Frozen French Fries Production Line
天然薯片/速冻薯条生产线
- P 21-22 Full automatic Baked Potato Chips Production Line
全自动烘培薯片生产线
- P 23-24 Full automatic Rice Cracker Production Line
全自动膨化米饼生产线
- P 25-26 Full automatic sandwich thin cookies production line
全自动夹心酥薄曲奇生产线
- P 27-28 Full automatic Multifunctional Wafer stick Machine
多功能全自动灌心蛋卷机
- P 29-30 HG Other Machines
其他配套设备
- P 31-32 OUR CUSTOMERS
我们的客户





Chairman 创始人: Jiang Jin Xiang

Shanghai model worker
District loving charity model
Industry pioneer of Shanghai food machine

Shanghai Fengxian Food & Beverage Equipment Factory
Shanghai Xin Fa Food Machinery Co.,LTD
Shanghai Bo Cheng Food Machinery Co.,LTD
Shanghai HG (hengguang) Food Machinery Co.,LTD
Shanghai Si Rui Food Manufacture Co.,LTD
Shanghai Yuhua International Trade CO.,LTD
Shanghai Industrial and Technical College

Shanghai HG (hengguang) Food Machinery Co.,Ltd., its head factory was built in 1970s. During its 50 years experience in the design and manufacturing of food machines, it now has developed into an enterprise with strong technical power, great reputation in local and global market. HG enterprise construction area is 20000 square meters and 80 employees.HG GROUP has passed the CE\SGS\BV\ISO9001:2008 certificates.

With a professional team for technical support as well as well trained and experienced sales team, HG GROUP produces food equipment with high quality, efficiency, safety. At the meantime, we also guarantee good after-sale service for the customers, and provide nice technology solutions for food projects. HG factories are located in the south of Shanghai with convenient transportation. And it takes only 45 minutes from our factory to the airport. Welcome new and old customers to visit HG factories and wish to cooperate with us in the future.

上海恒光食品机械有限公司，其总厂建于上世纪70年代，在食品机械设计和制造领域拥有50年成功经验，现已发展成为技术力量雄厚的企业，在中国乃至全球市场均获得良好的声誉。恒光机械占地总面积超过20000平方米，企业员工80人。产品均已通过CE、SGS、BV、ISO9001:2008等国际认证。

专业的技术人员、完善的销售团队既保障了恒光机械的设备优质、高效、安全又确保了良好的售前售后服务，助您的食品企业立于时代的前列。恒光机械位于上海南部，交通便利。从机场到厂区只需45分钟。欢迎新老客户来厂参观并愿在未来长期合作。

Mr. Jiang Jinxiang is not only the founder of Hengguang brand but also the pioneer of food machinery industry in China. As a famous entrepreneur and philanthropist, he often said: "Don't confine to machinery manufacturing itself, but more is to consider how to make a bridge between enterprises and consumers of food firm. With our continuous devotion, food enterprises are better to win the favor of consumers and it is also the most important mission of HG GROUP..."

Therefore, in Hengguang whether in developing new and old products, or reserching and adjusting formulation, both of them are combined with the demands in food consumer market. Meanwhile, we will provide the most comprehensive one-stop service for food enterprises!

蒋金祥先生不仅是恒光品牌的创始人，更是中国食品机械行业的先驱、著名企业家、慈善家他常说：“恒光从来不会把目光局限在机械制造本身，而是更多的考虑如何做好食品企业与消费者之间坚固的桥梁。用我们的专业协助食品企业更好的赢得广大消费者的青睐才是每一位恒光人最重要的使命。”

因此在恒光，不论是新老产品的研发升级还是配方工艺的研制调整都能充分结合食品消费市场的需求，为食品企业提供完善的一站式服务！



1965. Chairman Jiang Jin Xiang leveraged buyout the state-owned enterprise, then set up the head factory | 董事长把握商机收购国有企业，随后建立食品机械总厂
1975. Established the Xinfu & Bocheng and other professional food factories | 创办新发和博成及其他专业的食品工厂
1987. Successfully improved the technology of the tunnel oven and the hot air oven | 隧道烤炉和热空气烤炉技术成功改善
1990. Established the Sirui food factory | 创办思瑞食品工厂
1991. Invested and founded the Shanghai industrial and technical college | 投资创立上海工业技术学院
1992. The rice cracker line was successfully supplied to "Wantwant" company | 米饼生产线成功运用于旺旺公司
1995. The potato chips line was successfully exported to "Pringles" | 薯片线成功出口到品客
1999. Established a long-term and cooperative relationship with "DALI" GROUP | 与达利集团建立长期合作关系
2000. HG was established | 恒光品牌创立
2003. After only three years, HG occupied more than half of domestic market in wafer stick machine | 仅三年时间，恒光占据了国内蛋卷机一大半的市场
2007. In the technical innovation, we achieved a great success in the appearance and performance of the biscuit machine, cake machine, potato chips machine etc. Hence, nowadays our machine gains much popularity at home and abroad market | 恒光在饼干、蛋卷、薯片机等的外形及运作上取得巨大成就。现在我们的机器在国内外都有很好的市场
2008. HG head factory accessed to high-tech enterprise qualification and got more than 200 patents. In the same year, HG machine passed CE certification and entered to European market. | 恒光总工厂达到高新技术企业资质，获得超过200项专利，同年恒光机器通过CE认证并且进入欧洲市场
2009. Shanghai Yuhan International Trade Co., Ltd. was established | 上海屿涵国际贸易有限公司创立
2011. Annual export volume reached more than \$6 million in foreign trade business | 外贸部年出口量超过6百万美金
2012. HG researched Slice cake production line as well as Wafer stick machine successfully and independently | 恒光成功自主研发片装蛋糕生产线和蛋卷生产线
2013. HG Annual output value reached \$60 million, increased in productivity, and started to product cake, biscuit and wafer roll production lines at the same time | 恒光年收入达到6千万美金，产量增加，蛋糕蛋卷饼干线投产
2016. Based on itself, HG Group broadens the field and will achieves another great success | 拓展领域，再创佳绩



Manufacturing Workshop 车间剪影

We only provide the best products and service 我们只是做最好的产品和服务



PERFECT PRE-SALE SERVICES AND AFTER-SALES SERVICE | 完善的售前售后服务

From visiting our factory to inspecting, packing, shipping, commissioning and maintaining ect., we will help our consumers to solve all problems at any time and guarantee their interests.

从参观我们的工厂到检验、包装、运输、调试和维护等方面的工作，我们将帮助客户解决任何问题，保证客户的利益。

EXCELLENT QUALITY AND PERFORMANCE FOR PRODUCTS | 优秀的产品质量性能

In strict accordance with the industry and factory standards, as well as customer's requirements, HG uses high-quality stainless steel and mechanical parts etc in our machines as well as never use inferior materials and defective ones, which is the guarantee to the stable and long-term running of our machines.

恒光严格按照行业和工厂标准，以及客户的要求，使用优质的不锈钢和机械零件等，永不使用劣质材料和生产不合格的产品，保证机器长期稳定运行。

PROFESSIONAL TEAM FOR PROJECT DESIGNING AND INSTALLING | 专业的设计安装团队

HG has a team with more than 20 years' experience, which can design the machines based on customers' factory layout as well as provide the installation and setup and the recipe for free!

恒光拥有20年以上工作经验的团队，他们可以根据客户的工厂布局设计机器，并提供安装和调试以及免费的配方！





Fully automatic biscuit production line is a new generation of advanced equipment which can manufacture biscuits like soft biscuit, hard biscuit, soda biscuit and sandwich biscuit etc. It is composed of dough mixer, cutting machine, laminator machine, flattening machine, sugar spraying machine, tunnel oven, oil spraying machine, packing machine and so on.

饼干生产线是国内传统设备中新一代的先进设备。由和面机、翻料机、切块机、叠皮机、压皮机、成型机、撒糖机、隧道炉、淋油机、沥油机和冷却输送及整理机等组成。可生产韧性饼干、酥性饼干、苏打饼干、夹心饼干等各种不同种类的饼干。



Different choices in the front of line:

If you want to make hard biscuit, you need 4 sheeting roller and hard biscuit forming machine.

If you want to make soda biscuit, you need to add pre-sheeter, laminator machine.

If you want to make soft biscuit, you need soft biscuit forming machine.

If you want to make sandwich biscuit, you need to add biscuit sandwich machine on this basis.

According to customers' workshop layout, this line can also be equipped with: turning machine, egg spraying machine, fully automatic stacking machine and so on.

饼干生产线前段除了和面机、翻料机、切断机、撒糖机、入炉机为标配外，还有不同的配置：

生产韧性饼干需配备：4道压辊机、辊切成型机、余料回收系统

生产苏打饼干在上面的基础上还需配备：初压皮机、叠皮机

生产酥性饼干需配备：辊印成型机

生产夹心饼干需另外配备：饼干夹心机

根据客户厂房及不同需求，还可以配备：转弯机、喷蛋机、全自动理料线等



Type specification 型号	1200 Types	1000 Types	620 Types
Production capacity 产量	32 T / day	24 T / day	12 T / day
Installed power (Gas type) 燃气型功率	210 kw	190 kw	120 kw





As a fully automatic Custard/Cup Cake Production Line, it is developed based on the original equipment as a way to meet various demands of different food products factories. This whole line, also including outside of the oven, is made from stainless steel with high quality and we choose electronic components with well-known brands at home and abroad. It can not only produce core-filling custard pies as well as cup cakes, but also can produce cakes of various shapes by using different molds.

注心蛋黄派、纸杯蛋糕生产线是我厂根据国内市场需求，研制开发而成的全自动大型蛋糕生产线。整线包括烤炉外部，使用优质不锈钢制作而成，电子元器件采用国内外知名品牌，具有自动化程度高、运作稳定、烘烤量大、产品口感好保质期长等特点。它即能生产注芯蛋黄派蛋糕，又能生产纸杯蛋糕，切片蛋糕，根据模盘的形状变化，即能生产不同形状的花色蛋糕。

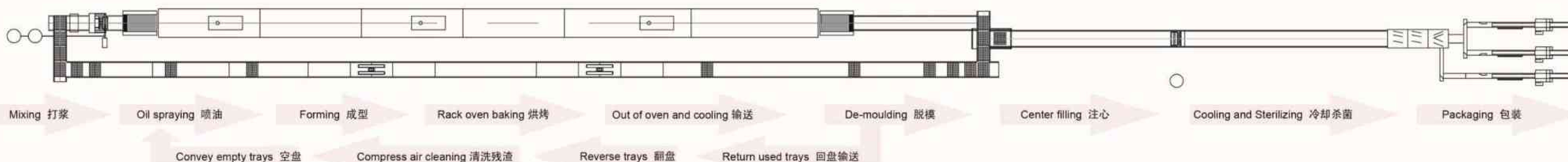


Production capacity 型号产量	20 T/day	10 T/day
Total installed power 总功率	85 kw	75 kw
Gas consumption 耗气度	20-35 kg/h	15-30 kg/h
Length 长度	86 m	83 m



Hot air circulation tunnel oven: As a novel baking furnace, which is developed by our factory on the basis of the imported equipment, it adopts the most advanced gas combustion and hot-air circulation heating mode. It has six temperature zones: front, middle, back, up and down. After setting the temperature, the control motor is used for automatic controlling by a disc valve and the heat is transferred to the hearth by the air duct up and down to bake food. There are many pros of the this oven, such as quick heating, stable temperature, little change, automatic controlling of temperature, etc.. Therefore, the final products are good taste, soft, more uniform in surface color, bright, fresh, and tender, etc.

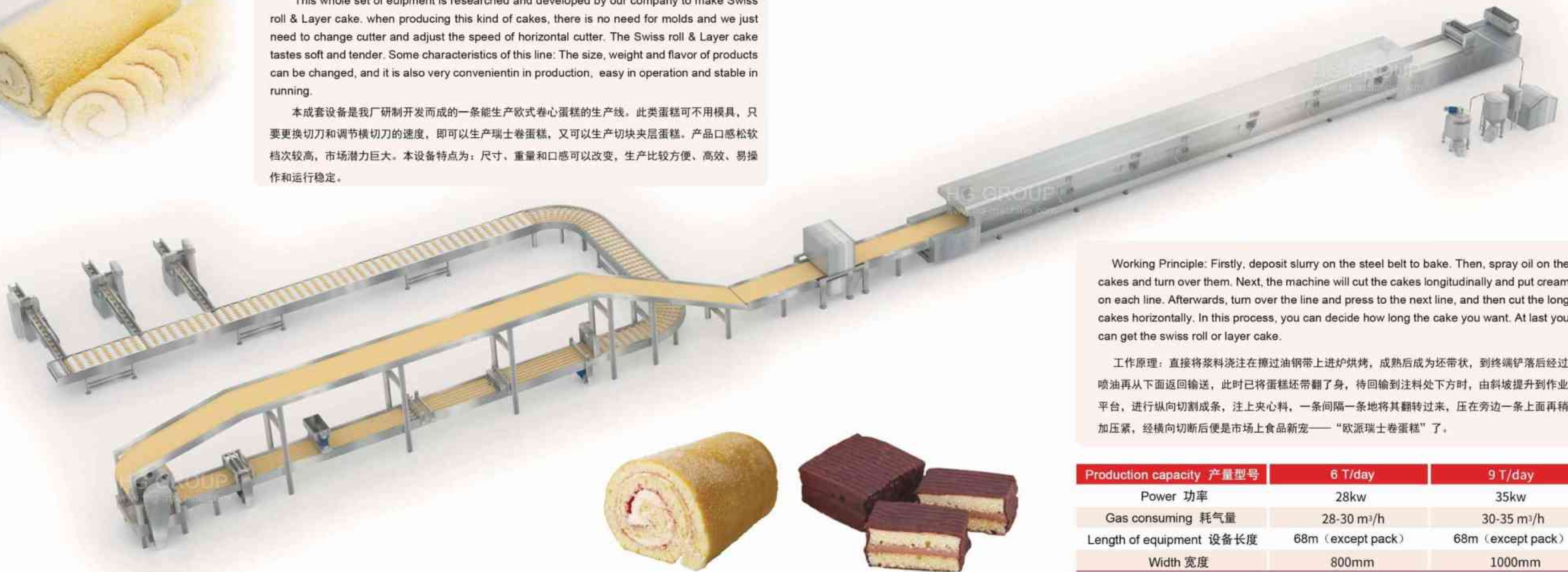
燃气热风循环烘烤炉是我厂在进口设备的基础上研制而成的新颖烘烤炉，该炉采用先进的瓦斯燃烧，热风循环加热方式，分前、中、后上下共六个温区，温度设定好后由比例马达通过蝶型阀自动控制，温度通过风道分上下传递到炉膛进行烘烤食品，具有加热快、温度稳定、变化小、温度自动控制等优点。从而使蛋糕口感更佳松软，表面色泽更加均匀、鲜嫩等优点。





This whole set of equipment is researched and developed by our company to make Swiss roll & Layer cake. when producing this kind of cakes, there is no need for molds and we just need to change cutter and adjust the speed of horizontal cutter. The Swiss roll & Layer cake tastes soft and tender. Some characteristics of this line: The size, weight and flavor of products can be changed, and it is also very convenient in production, easy in operation and stable in running.

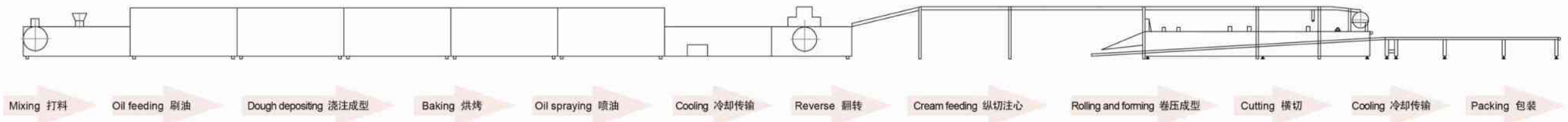
本成套设备是我厂研制开发而成的一条能生产欧式卷心蛋糕的生产线。此类蛋糕可不用模具，只要更换切刀和调节横切刀的速度，即可以生产瑞士卷蛋糕，又可以生产切块夹层蛋糕。产品口感松软档次较高，市场潜力巨大。本设备特点为：尺寸、重量和口感可以改变，生产比较方便、高效、易操作和运行稳定。



Working Principle: Firstly, deposit slurry on the steel belt to bake. Then, spray oil on the cakes and turn over them. Next, the machine will cut the cakes longitudinally and put cream on each line. Afterwards, turn over the line and press to the next line, and then cut the long cakes horizontally. In this process, you can decide how long the cake you want. At last you can get the swiss roll or layer cake.

工作原理: 直接将浆料浇注在擦过油钢带上进炉烘烤，成熟后成为坯带状，到终端铲落后经过喷油再从下面返回输送，此时已将蛋糕坯带翻了身，待回输到注料处下方时，由斜坡提升到作业平台，进行纵向切割成条，注上夹心料，一条间隔一条地将其翻转过来，压在旁边一条上面再稍加压紧，经横向切断后便是市场上食品新宠——“欧派瑞士卷蛋糕”了。

Production capacity 产量型号	6 T/day	9 T/day
Power 功率	28kw	35kw
Gas consuming 耗气量	28-30 m ³ /h	30-35 m ³ /h
Length of equipment 设备长度	68m (except pack)	68m (except pack)
Width 宽度	800mm	1000mm





The fully automatic sandwich cake production line uses eggs and flour as main raw materials. You can get the delicious original chocolate pies and strawberry pies, which are deeply welcomed by consumers, through mixing, foming, baking, cooling, vertical stacking, turing over, horizontal stacking, cream filling, sandwiching and packing. Some characteristics of this manufacturing line: high degree of automation, stable running, high efficiency, low labor costs, easy operation, and long shelf time of products.

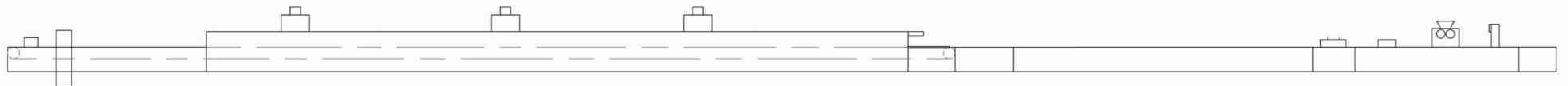
全自动双片夹层蛋糕生产线使用鸡蛋和面粉为主要原料，搅拌成稠浆状，经过注料、焙烤、冷却、整理、翻饼、注心、夹心等工序，制成喷香美味的蛋黄派、时尚派、休闲派、草莓派等系列夹心蛋糕，深受消费者青睐。本生产线的特点：自动化程度高，集光、电、气、机为一体，运行稳定高效。人工少，操作方便，产品保质期长。



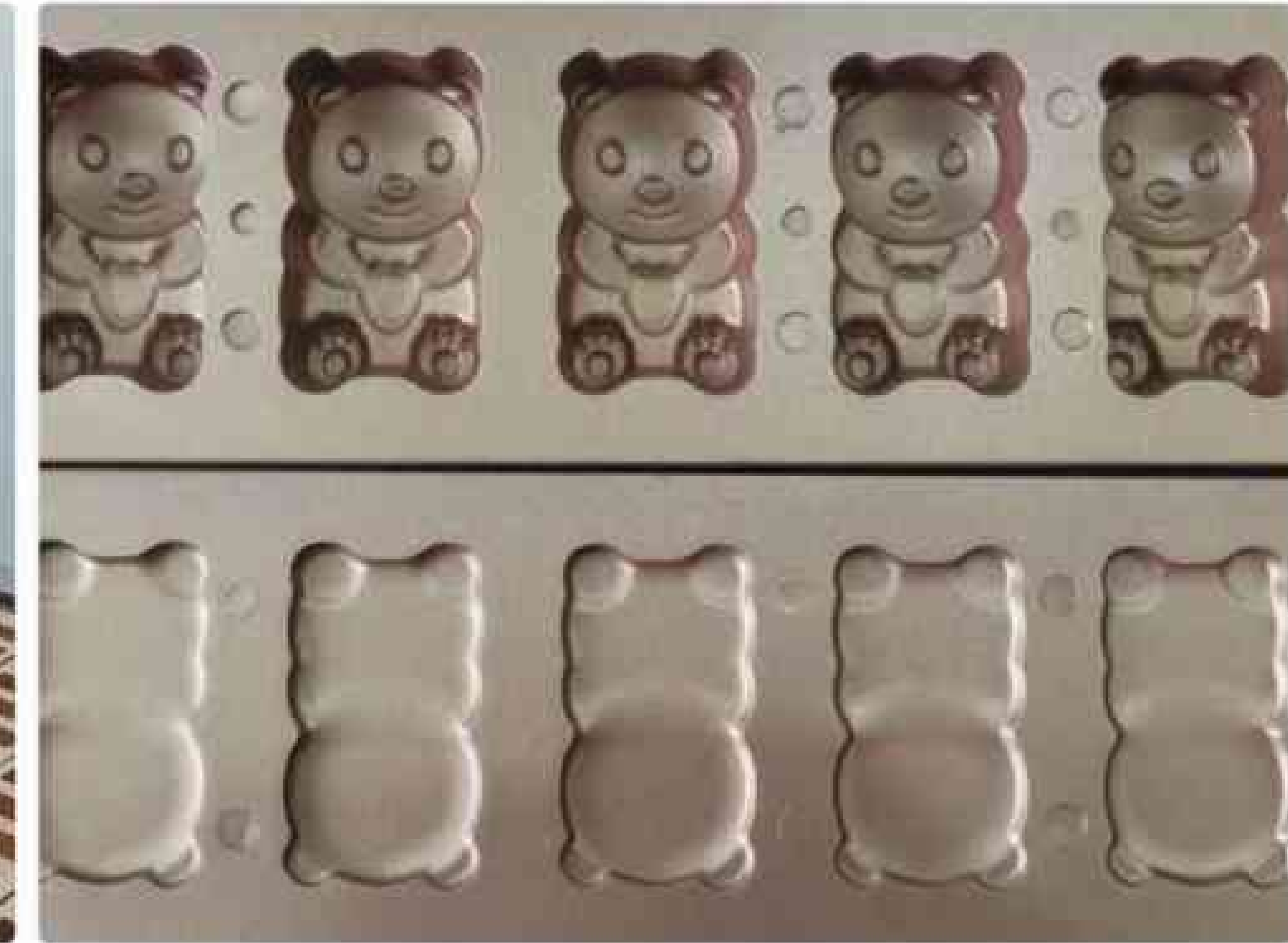
This production line is mainly made up of slurry mixer, paper feeder machine, depositing and forming machine, tunnel oven, cooling conveyor, paper recycling machine, vertical stacking machine, cake turn-over machine, horizontal stacking machine, sandwiching machine (for cream filling), cooling machine. You can also add the chocolate coating machine to make chocolate pies.

主要机器：打浆机、送纸机、注料成型机、烤炉、纸回收机、冷却输送机、纵向整理机、翻饼机、横向整理机、注心机、夹心机、冷却输送机。客户可以选择增加巧克力涂层机，生产更高档美味的巧克力派。

Production capacity 产量型号	4.5-5 T/day	8.5-9.5 T/day
Total power 总功率	35 kw/h	45 kw/h
General length 设备长度	54m (except pack)	80m (except pack)
Gas consumption 耗气量	25-35 kg/h	35 kg/h



Mixing 搅拌 → Feeding baking paper 送纸 → Cake forming 蛋糕胚成型 → Baking 烘烤 → Cooling 冷却输送 → Vertical stacking 纵列整理 → Turning over cakes 翻面 → Horizontal stacking 横排整理 → Cream or marshmallow filling 注心 → Sandwiching 夹心 → Packing 包装



全自动小熊蛋糕生产线是我厂根据市场需求结合多项技术专利研发的新型工艺蛋糕生产流水线，受到国内外客户的广泛青睐。

本设备自动化程度高，从供料、下料、烘烤、脱模到冷却输送包装，整个流程实现自动化控制为您极大的节省人力成本。设计合理运行稳定，用料扎实精工打造，确保了其生产过程的安全、可靠和卫生和高效。

本设备生产的“小熊系列工艺蛋糕”色泽艳丽，绵软可口、老少皆宜，并以其逼真的造型深受广大消费者喜爱，是当今国际流行的时尚休闲食品之一。

主要设备如下：

喷油机、挤料机、烤炉、脱模机、传输机、注芯机、理料机、包装机。

Fully automatic bear cake production line is developed by our factory according to market demands. Besides, it is deeply welcomed by domestic and foreign customers.

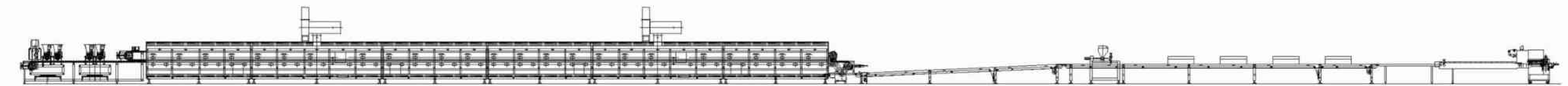
This line has a high degree of automation. From material supply, material depositing, baking, demoulding to cooling and packing, all processes are fully automatic, which will save a lot of your labor cost. What's more, the machine with good manufacturing material has reasonable design and can run stably.

Through this line, you can produce bear cakes with good looking, tenderness and good tasty. It gains much popularity among all ages of people.

Main equipments: oil sprayer, extruder, baking oven, demoulding, conveyor, filling machine, packing machine.

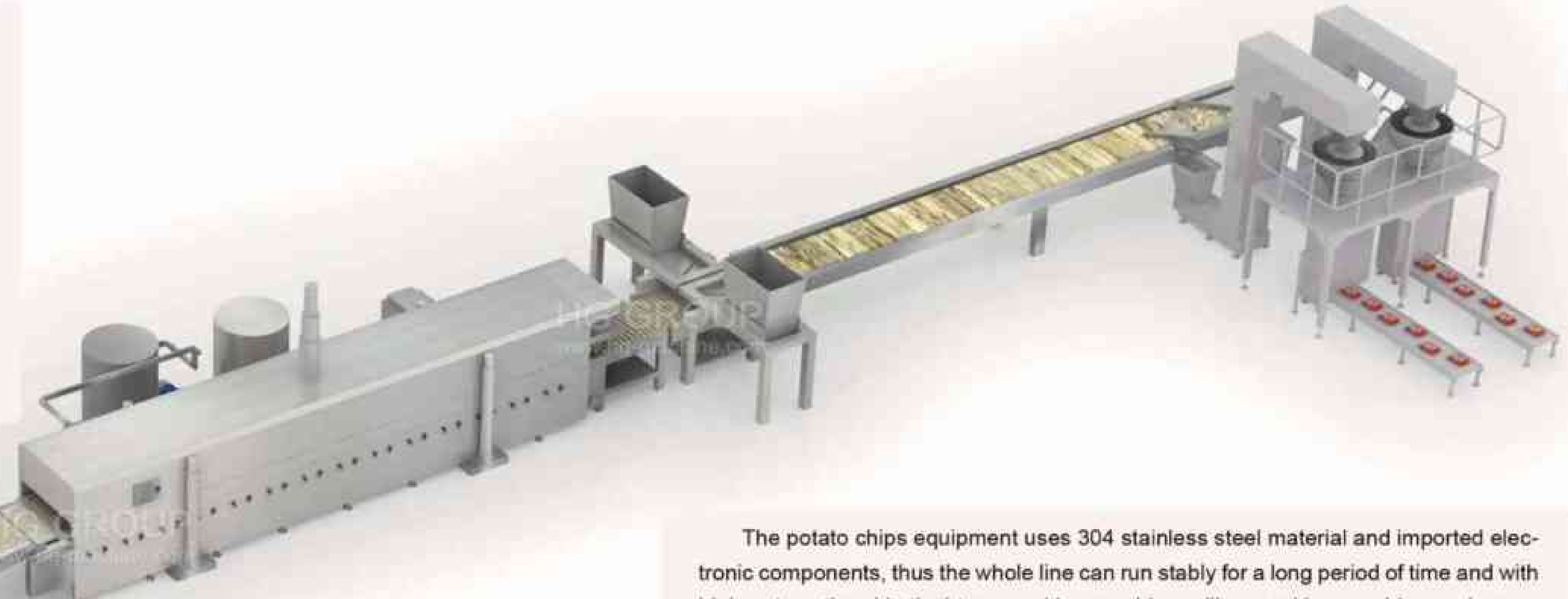
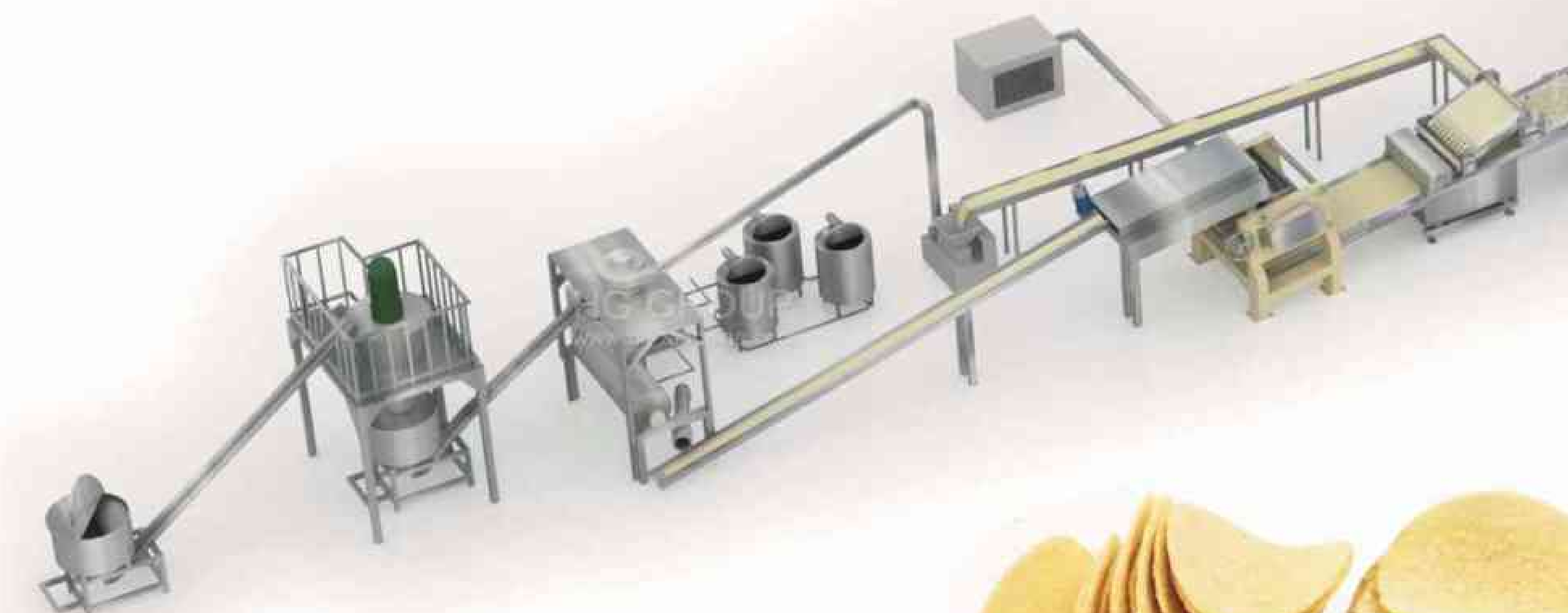


Capacity 产量型号	10 T / day
Power 功率	46 kw
Gas consuming 耗气量	30 kg/h
Length 长度	60 m



Based on European and American technologies, It took HG Group more than one year to research and develop this fully automatic compound potato chips production line. The equipment uses potato powder as raw material, and gains crispy as well as delicious compound potato chips through mixing, pressing, forming, frying and flavoring. It has become the preferred investment project for today's food manufacturers.

香脆美味的复合薯片，本是作为休闲食品流行于欧美发达国家，随着国门的开放，国内市场出现了舶来品“品客”筒装薯片，后又相继推出了用进口设备制作的“大家宝”、“圆圆”薯片，但因其投入成本大而导致产出品薯片价格昂贵，消费群体不大。我厂用一年多时间研制开发了仿国外技术的复合薯片生产设备，本来投入成本昂贵的复合薯片生产设备，现仅为进口设备的八分之一。香脆美味的复合薯片在国内外有巨大的消费群体，用廉价的国产设备生产俏价的复合薯片成为了当今食品厂商投资的优选项目。



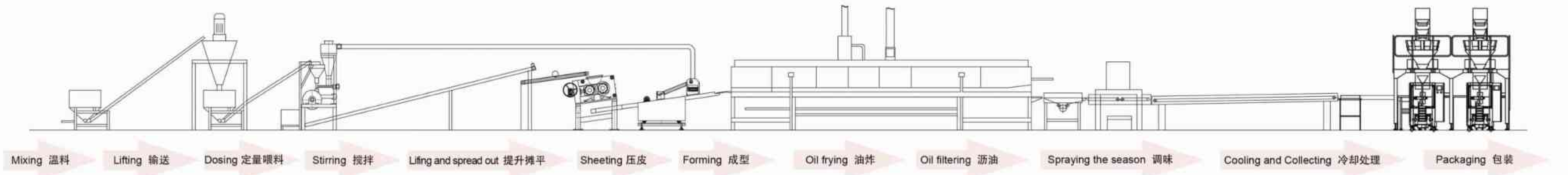
The potato chips equipment uses 304 stainless steel material and imported electronic components, thus the whole line can run stably for a long period of time and with high automation. Vertical type packing machine, pillow packing machine and paper tube packing machine are all feasible for the final products. There are physical prototypes in our factories, and welcome all customers to visit.

本机组食品接触的部分以及其他大部分，均为不锈钢材质，整线运行稳定，自动化程度高。产品可以选择立式袋包装、枕式盒装或者更高档的纸桶包装，市场需求量大，香脆可口老少皆宜。本厂有实物样机，免费提供专业的厂房规划设计、人员培训以及基础工艺配方，欢迎新老客户光临洽谈。



Production capacity 型号产量	250 kg/h	500 kg/h
Installed power 总功率	130 kw/h	150 kw
Fuel consumption 耗燃油	25 kg/h	35 kg/h
Gas consumption 耗气量	25-30 m³/h	40-50 m³/h
Equipment length 设备长度	40 m	40 m

Lorem Ipsum





Our potato chips production line use fresh potatoes as material and can get delicious potato chips through washing, peeling, cutting, oil frying and flavoring. Our potato chips production line is very advanced, for instance, blanching pool adpts steam boiler to heat directly. After blanching, we use high pressure blower to dewater the potato chips and then oil fry them. After the process of oil frying, it will be deoiled and flavored.

The main equipment: Washing and destone machine, Peeling machine, Cutting Machine, Blancher, Fryer, Seasoning machine.

我们的薯片生产线采用新鲜马铃薯为原料，经过清洗、去皮、切片、油炸、着味等工序产出香脆美味、高质量的天然薯片。本机械就是完成上述全部制作过程的全自动生产流水线设备，技术水准进入国际先进行列，实现自动化生产，无需专人操作。漂烫池利用锅炉蒸汽直接加热的方式，工作过程中边漂烫边换水。漂烫完毕后通过网带输送至震动筛，边风吹边震水，再进入油炸流水线。油炸完毕后风吹沥油冷却后进入自动拌料机。

Capacity 产量型号	100 kg/h	300 kg/h
Power 功率	50 kw	60 kw
Gas consuming 耗气量	300 kg/h	500 kg/h
Length 长度	about 40 m	about 50 m

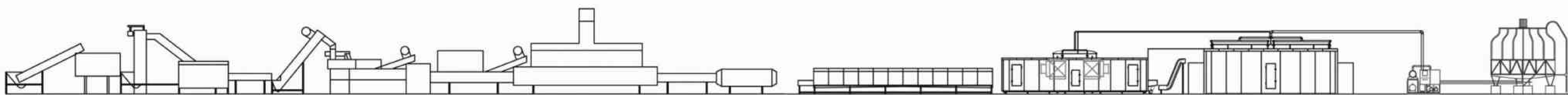
The main parts: Elevator, De-stone machine, Washing machine, Weigh hopper, Steam peeler, Collect and feeding hopper, Brush separator, Inspection conveyor, Cutting machine, Blanching machine, Second blanching machine, Vibrating water filter, Pre-drying machine, Oil fryer, Oil tank, De-oil machine (vibration type), Pre-cooler, Freezer unit.

Main characteristics: the whole line have high automation, all material is SUS304, use imported cutter and quick freeze compressor. The electronic parts of fryer use Panasonic, Omron and so on, guarantee the machine have a stable running.

主要组成：提升输送机、清洗机、去石机、称重料斗、去皮机、收集喂料料斗、毛刷分离机、带式拣选输送机、预蒸煮机、切条机、长度分级机、拣选传送带、漂烫机、振动滤水机、干燥机、连续油炸机、振动沥油机、预冷机、速冻机。

主要特点：整线自动化程度高，全部采用SUS304不锈钢制造，使用进口切刀和速冻压缩机，油炸机等电器部分主要设备采用松下、欧姆龙等进口元器件，保证整机长期稳定地运作。

Capacity 产量型号	500 kg/h	1000 kg/h
Power 功率	230 kw	480 kw
Length 长度	about 54 m	about 59 m
Add The Cooling System (no packing, no turning) 增加速冻系统 (不包括包装, 不转弯)		
Power 总功率	370 kw	760 kw
Length 长度	about 86 m	about 95 m





Based on the technological characteristics of compound potato chips and biscuit production line, our company researched and developed this new generation of baked potato chips production line. The equipment can produce new type potato chips, which is much healthier and non-fried, by the process of flattening, baking, flavoring. With the characteristics of high automation, easy operation, stable running, etc, this line is popular among the food factories at home and abroad.

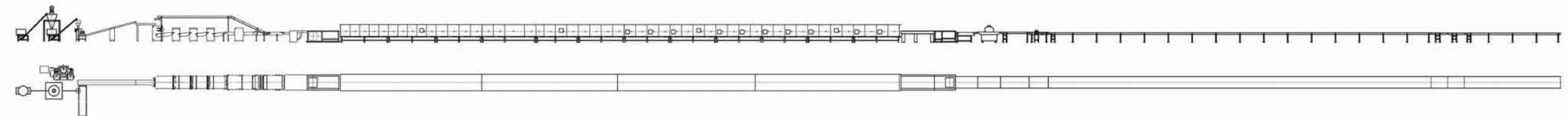
烘焙薯片生产线是我厂根据复合薯片和饼干生产线的技术特点研发生产的新一代非油炸的烘焙薯片设备。该设备将压制成型的薯片，经过隧道炉自然烘烤，然后调味制成健康非油炸的新式薯片。该设备具有自动化程度高、操作简便、运行高效稳定等特点，顺应现代食品发展的趋势，深受国内外食品厂商的欢迎。



Main equipment: V type mixer, conical mixer, stirring extruder, lifting and conveying machine, 3 sheeting machines, forming machine, waste-recycling machine, baking oven, oil-sprayer, oil-filter, flavoring machine, stacking and cooling conveyor.

主要设备有：混料机、供水系统、锥形混合机、搅拌挤出机、摊平输送机、三道压辊压棱机、成型机、余料回收机、烤炉、淋油机、沥油机、撒粉调味机、整理输送带。

Production capacity 产量型号	250 kg/h	500 kg/h
Installed power 总功率	130 kw/h	140 kw
Gas consumption 耗气量	25 kg/h	45-50 kg/h (LPG)
Compressed air pressure 空压	25-30 m ³ /h	5-7 kg
Equipment length 长度	110 m	130 m

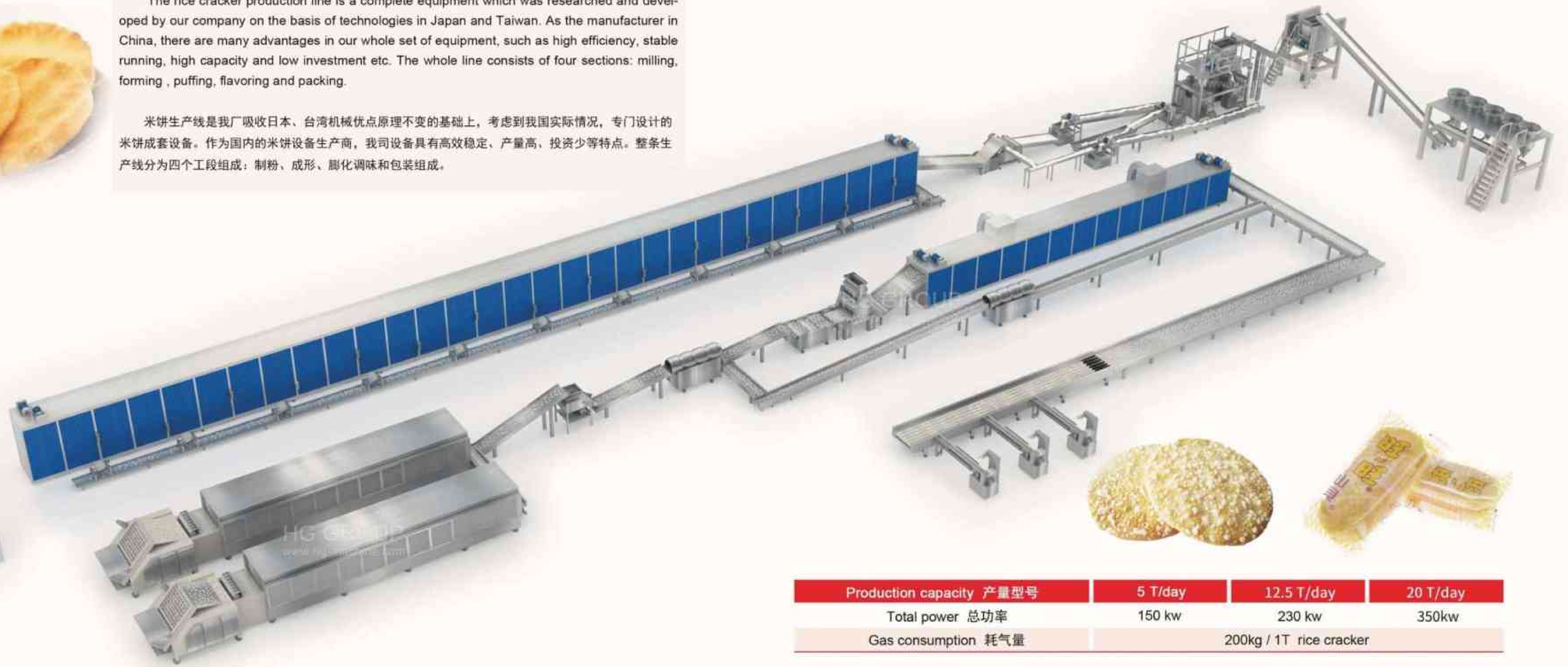


Raw material lifting 原料提升 → Mixing 搅拌 → Conveying constantly 输送提升 → Conveying 定量输送 → Mixer and extruder 搅拌熟化挤出 → Sheeting 压皮 → Forming 成型 → Baking 烘烤 → Oil spraying 喷油 → Seasoning 调味 → Cooling 冷却输送 → Arranging 理饼 → Packing 包装

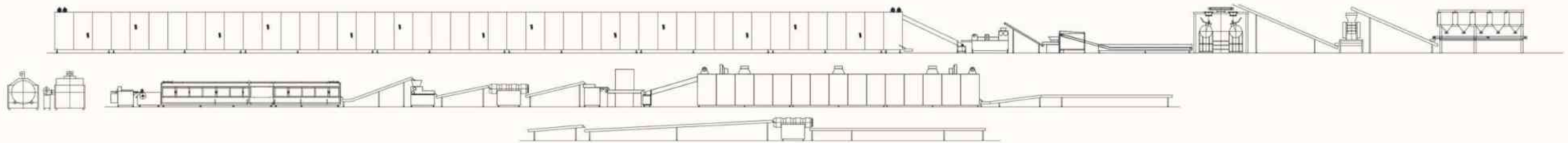


The rice cracker production line is a complete equipment which was researched and developed by our company on the basis of technologies in Japan and Taiwan. As the manufacturer in China, there are many advantages in our whole set of equipment, such as high efficiency, stable running, high capacity and low investment etc. The whole line consists of four sections: milling, forming, puffing, flavoring and packing.

米饼生产线是我厂吸收日本、台湾机械优点原理不变的基础上，考虑到我国实际情况，专门设计的米饼成套设备。作为国内米饼设备生产商，我司设备具有高效稳定、产量高、投资少等特点。整条生产线分为四个工段组成：制粉、成形、膨化调味和包装组成。



Production capacity 产量型号	5 T/day	12.5 T/day	20 T/day
Total power 总功率	150 kw	230 kw	350kw
Gas consumption 耗气量	200kg / 1T rice cracker		



Steeping and milling 浸米磨粉 → Steaming 蒸练 → Extrusion 挤练 → Forming 成型 → First drying 首次干燥 → Cooling 冷却 → Second drying 二次干燥 → Baking 焙烤膨化 → Spraying oil 淋油 → Seasoning 调味输送 → Spraying sugar 挂糖 → Third drying 三次干燥 → Packing 包装



夹心酥薄曲奇系列产品是目前风靡日本的休闲食品，以其独特的外形、松脆口感、美妙的滋味赢得了当地众多消费者的追捧。

如今我厂将成熟的日本制造技术以及先进制造经验引进国内，结合国内外新老客户的需求升级改良，研发出了这一款符合更多市场需求的夹心酥薄曲奇生产线。本设备全自动运行，从供料、成型、烘烤、浇注到冷却理料包装，整个流程全部实现自动化控制。得益于我厂资深的专业团队优化，整条生产线布局合理，运行稳定质量可靠，辅以完善的配套服务，确保食品生产厂家的生产任务安全、卫生、高效高回报。

主要设备如下：

擦油机、成型挤料机、巧克力浇花机、燃气烤炉、干清洗机、翻转机、切断机、冷却输送机、包装机。

The products of sandwich thin cookies series are sought-after in Japan because of its particular shape and crispy taste.

Now HG Group introduces the mature Japanese manufacturing technology and advanced manufacturing experience to our machines. What's more, HG improves it with domestic customers' demands and then designed this fully automatic sandwich thin cookies production line. Our professional team devoted themselves to optimize the overall arrangement: from material loading, to forming, baking and filling. The whole process is entire automation with stable running. We also supply high-quality service to ensure healthy and safe production.

Main equipments: Oil wiping machine, extruder, chocolate decorating machine, gas oven, dry cleaning machine, turn over machine, cutting machine, cooling conveyor, packing machine.



Capacity 产量型号	8 T / day
Power 功率	25 kw
Gas consuming 耗气量	25 kg/h
Length 长度	60 m





HWB wafer stick machine is a domestic new generation of automatic equipment. It can produce crispy, hollow or center filled wafer stick with different shapes and size. The technology of HG wafer stick machine comes from Japan and German. After researching and developing by ourself, this machine is one of the most popular equipment at home and abroad.

HWB型蛋卷机是采用日本技术开发研制的国内新一代用于生产空心 and 灌心威化棒的全自动设备。其组成有一台原料打浆机、一台烘焙主机、一台送浆与灌心机、一台球磨机以及一台冷却输送机。原料按配方放入打浆机搅拌均匀后，用送浆机把粉浆送到烘焙主机加热的轮盘上，烘焙后，刮刀将软的粉条刮出，放进卷芯棒轴（本机标配二组芯棒轴）绕成棒状，切成所需长度，利用坑槽送至输送带收集。

The main assistant parts | 主要组成机器:

- | | |
|--|--|
| 1. Baking main machine: baking and rolling flour sheet. | 烘焙主机: 烘烤面带及卷制面带。 |
| 2. Feeding and filling machine: feeding the mixed flour on the gear of oven and filling cream or chocolate jam. | 送浆机与灌心机: 把面浆挂在烤炉内的烤轮上, 卷制面皮时注入奶油或巧克力浆, 二机一体占地小, 方便易清洗。 |
| 3. Raw material beating machine: mixing flour. It adopts blade stirring to make sure the mixing time is shorter as well as the flour is mixed more evenly. (Volume: 30L) | 原料打浆机: 用于搅拌面粉, 采用叶轮式搅拌, 优点为搅拌时间短, 浆料均匀 (容量30升) |
| 4. Ball mill machine: the fillings can have much better liquidity and be smooth, uniform and good taste. | 球磨机: 灌芯料经球磨后浆料流动性好, 光滑均匀口感好 |
| 5. Cooling conveyor: cooling and conveying the finished products. | 冷却输送机: 冷却输送成型后的蛋卷。 |



- ◇ The oven can be baked by gas/electricity, and the heating system adopts automatic ignition technique | 该炉可采用燃气/电加热, 加热系统采用自动点火技术
- ◇ Auto alarm system. The gas supply will be turned off when alarming | 自动报警系统, 报警后气体供应将被关闭
- ◇ Auto temperature control system. Effective heat preservation can make a full use of energy | 自动温度控制系统, 有效的保温可以充分利用能源
- ◇ The wafer stick can be partly or fully filled. Besides, the length and diameter are changable | 威化棒的直径可通过调节芯棒轴改变, 长度可以调节光电触动切刀。
- ◇ Use PLC system and stainless steel of high quality | 机组均装置可编程控制器 (PLC) 主要电机使用变频器控制, 烘焙轮盘的速度可使用变频器控制电机
- ◇ Provide free process recipes, plant planning and personnel training | 免费提供基础工艺配方、厂房规划及人员培训

Main technical parameters | 主要技术参数:

Model 型号	Natural Gas Heating 燃气加热型	Electric Heating 电加热型
Total power 总功率	8 KW	40 KW
Main machine size 主机尺寸	3400×1700×2250 mm	3400×1700×2250 mm
Gas consumption 耗气量	LPG液化:5kg/h Natural Gas天然:8-9 m3/h	
Production capacity 产量	Hollow空心:25-30kg/h Filled灌心: 50-60 kg/h	Hollow:25-30kg/h Filled: 50-60 kg/h
Wheel diameter 烤轮直径	1800 mm	1800 mm
Weight 总重量	4 T	4 T

Add to: Mini pillow wafer stick machine
枕式迷你机



Flattening machine
压扁机



Chocolate coating machine
巧克力涂层机



Pillow Packing Machine 枕式包装机



This packing machine can be used to pack strip-shaped, block-shaped sheet-shaped food such as wafer stick, cake, biscuits, rice cracker, potato chips and so on, packing type and parameters can be customized.

本机可用于包装蛋卷、饼干、米饼、蛋糕、薯片等所有条状、块状、片状的食物。包装类型与包装参数，可按照客户的要求来做相应的配置。



HG-Vertical type packing machine is a completely automatic machine to pack food into different size plastic bags. With a high sensitive 10-head weighter, HG-vertical type packing machine is capable of controlling the weight of the final package at a concise level. It is widely used for many popular snacks, such as, potato chips, cakes, candy, chocolates, etc.

立式包装机是一套可以将食品包装进不同大小的塑料袋的全自动包装设备。只需要简单的设置，运用灵敏的10头称，包装机自动可以将最终的包装袋重量控制在一个恒定的水平。对于休闲食品的包装，其具有非常广泛的应用，比如可以包装薯片、饼干、蛋糕、巧克力、糖果等食品。

Vertical Type Packing Machine 立式包装机



Biscuit sandwich machine 饼干夹心机



This machine is used to make sandwich biscuit such as cream, jam, and chocolate sandwiching. The whole set equipment use foreign advanced technology. It's the best choice for making the best sandwich biscuits.

该机器是将奶油、果酱、巧克力等夹入饼干的高速自动设备。采用国外先进技术，运行稳定高效，是生产中、高档夹心饼干的最理想设备。



Air mixer 充气搅拌机



The air mixer is a new type machine which we research and develop independently combined with the foreign technology after many years market survey. This machine let the food industry enter into a new era. Compared with the old mixing machine this machine can save many manpower. The machine have the function of raw material batching, conveying blending, foaming, forming etc.

充气搅拌机是我公司经过多年市场调查，结合国外技术自主研发的新式搅拌机。从以前老式的搅拌机到现在的充气搅拌机，省却了很多的人力。此机提供生产设备范围包括原材料配料、输送、混合、发泡、成形等。

Chocolate Coating Machine 巧克力涂层机



The enrobing line is to coat chocolate on various food such as wafers, biscuit, egg rolls, cake pie, swiss roll and snacks etc. Cooling tunnel is available.

本机是生产花色巧克力品种的专用设备，能在多种食品表面浸涂巧克力浆料，诸如蛋卷，威化，饼干，蛋糕，瑞士卷，膨化食品等，形成多种口味独特的巧克力制品。



Project / Model 项目/型号	HG-400	HG-600	HG-800	HG-1200
Wiremesh & belt width 网带、皮带宽度	400 mm	600 mm	800mm	1200 mm
Refrigeration unit 配套制冷机组	2 sets 套	3 sets 套	4 sets 套	5 sets 套
Cooling tunnel length 隧道长度	10 m	14 m	18 m	22 m
Cooling tunnel temperature 隧道温度	2-10 ℃	2-10 ℃	2-10 ℃	2-10 ℃
Total power 全机功率	16 kw	16.5 kw	22.87 kw	28.5 kw
weight 重量	1800 kg	2300 kg	3200 kg	4050 kg
Outside dimensions 外形尺寸	13160×700×1500 mm	17500×950×1800 mm	21500×1200×1800 mm	25500×1450×1800 mm

Patent No
专利号

2007203064373
200720306441X



Main Features :

The machine is well-knit structure,high-speed, good automaticity,saving energyand no harmtoenvironment.The machine is China's patent product.

Patent No:2007203064373

200720306441X

主要特点:

本设备结构紧凑、效率高、自动化程度高、且具有节能环保的特点。设备为中国专利产品。

专利号:2007203064373

200720306441X

Fortune cookies are sweet and crispy cookies shaped like "yuanbao" (a traditional Chinese gold or silver ingot symbolizing wealth), with small paper slips containing auspicious messages inside. They are a food product with unique Chinese cultural characteristics.

This production line equipment goes through processes including raw material mixing, batter forming, high-temperature baking, cookie folding, paper slip insertion, and cooling & setting. It can precisely control the thickness of the cookies and the folding angle, with fully automated and continuous connection between processes. This ensures that every fortune cookie not only retains its cultural characteristics and delicious taste but also meets the professional requirements of large-scale production.

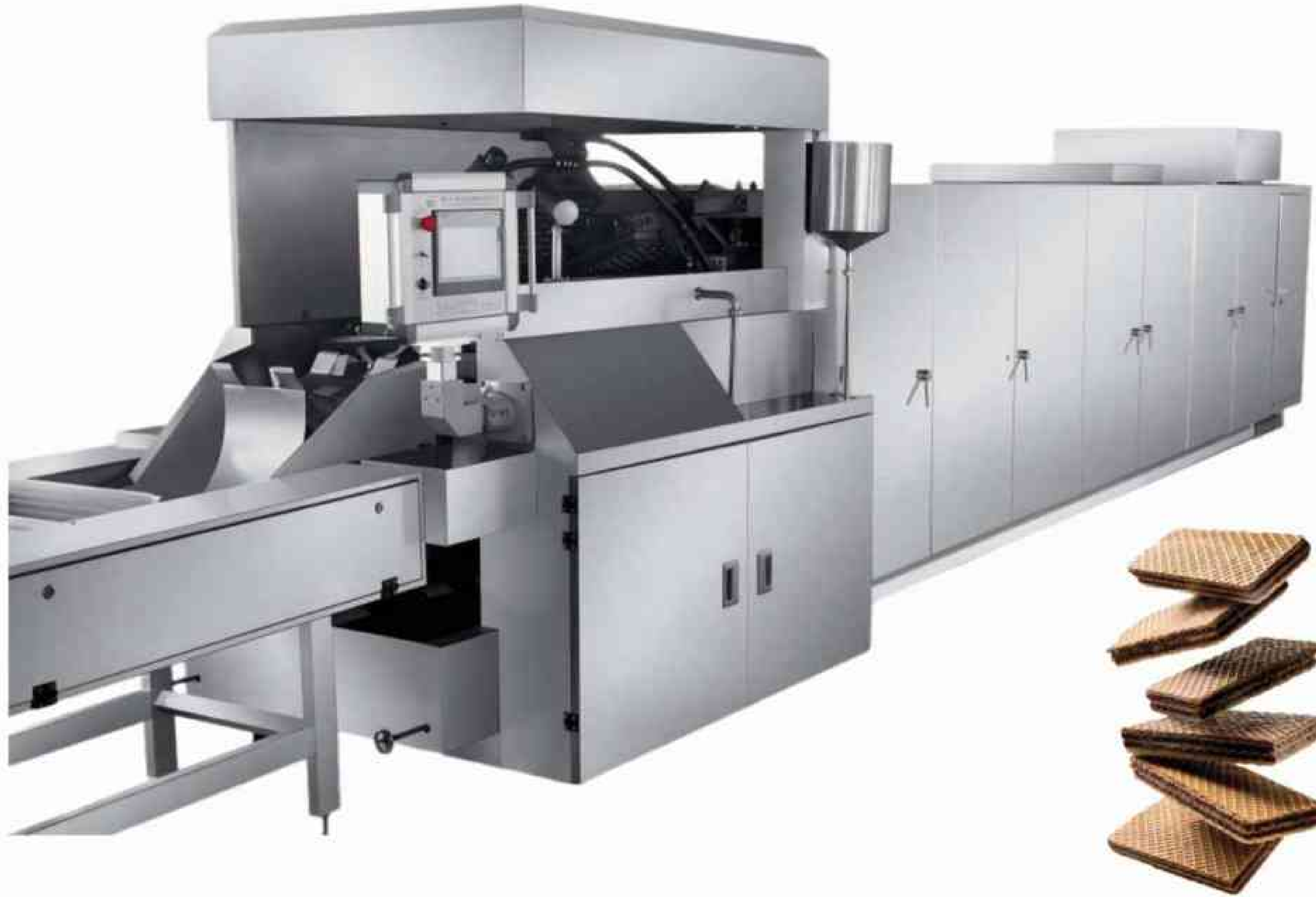
签语饼是一种形似“元宝”内夹吉祥语言纸签的甜脆饼，是独具中国民族文化特色的食品。

本生产线设备经过原料混合、面糊成型、高温烘烤、饼身折叠、插纸条、冷却定型等工序，可精准控制饼身厚度与折叠角度，全自动化连贯衔接，确保每一枚签语饼既保留文化特色与美味口感，又满足规模化生产的专业要求。

TECHNICAL DATA | 技术参数

Capacity 产量型号	38kg/h	76kg/h
Quantity 数量	6000-7200 Grain/h	12000-14000 Grain/h
Power 耗电	3kw	4.5kw
Coal gas 耗煤气	About 15kg/h	About 20kg/h
Weight 重量	6500kg	7200kg
Length 长度	8900mm	8900mm





The fully automatic wafer production line is developed based on market demand and integrated with multiple technologies, with a high-performance baking system as its core. The baking system uses gas heating to supply heat to the baking plates, ensuring uniform heat transfer and rapid temperature rise. This allows it to quickly meet the temperature requirements for wafer baking while being more energy-efficient than traditional electric heating, effectively reducing production energy consumption. It can stably produce crispy, well-layered wafers, making it suitable for large-scale production in food factories and snack companies. With advantages such as high efficiency, stable quality, and easy operation, it helps enterprises quickly respond to market demands.

全自动威化饼生产线是根据市场需求结合多方面技术研发而成，尤其以高性能烘烤系统为核心支撑，烘烤系统采用燃气加热方式为烘烤盘供热，热量传递均匀且升温速度快，能快速满足威化饼烘烤所需的温度条件，同时相比传统电加热更节能，有效降低生产能耗，可稳定产出口感酥脆、层次分明的威化饼干，适配食品厂、零食企业等批量生产场景，兼具品质稳定、操作便捷等优势，助力企业快速响应市场需求。



Main equipments:

WSD-39 Plates、Gas Baking Oven、Sheet Receiver、Cooling Machine、Sheet Picking Machine、Cream Spreading Machine、Cooling Cabinet、Laminating Machine、Cutting Machine、Batter Mixer、Cream Mixer、Smashing Machine.

主要设备如下:

烤盘、燃气烤炉、面片接收装置、冷却机、面片拾取机、奶油涂抹机、冷却柜、覆膜机、切割机、面糊搅拌机、奶油搅拌机、粉碎机。

Main technical parameters | 主要技术参数:

Model 型号	120~150kg/h
Gas consumption 耗气量	LPG液化:19kg/h Natural Gas天然:30CBM/h
Finished Sheet rate 成品片率	98%
Consumption of compressed air 压缩空气消耗	19kg/h (LPG)
Baking plate size 烤盘尺寸	470mm×325mm
Baking time 烘烤时间	120s~150s
Length 长度	25.45m

Cooling Machine
冷却机



Cream Spreading Machine
奶油涂层机



Cutting Machine
切割机



FDMW Series Horizontal Wheat Scourer:

FDMW Series Horizontal Wheat Scourer is the ideal equipment to clean the wheat with drying method for the wheat flour plants. It not only breaks up the mud mixed in the wheat and removes the poorly diseased wheat kernels, but also knock down the dust on the surface of the wheat kernels, the sand embedded in the wheat ditch, wheat wool and other impurities.

FDMW系列卧式打麦机:

FDMW系列卧式打麦机是面粉厂干法清理小麦的理想设备之一。它不仅将混杂在小麦中泥块打碎，还将强度较差的病害变质麦粒打碎清除，同时将麦粒表面的灰土、嵌在麦沟里的泥沙、麦毛等杂质打下。



参数Parameter 型号Model	产量 Output (t/h)	动力 Power (kw)		筛筒长度 Length (mm)	尺寸 Dimension (mm)
		主 轴 电 机	副 轴 电 机		
FDMW40*60	3-5	4.0	5.5	600	1700*920*1686
FDMW40*100	5-8	5.5	7.5	1000	2100*920*1686
FDMW40*150	8-13	7.5	11	1500	2600*920*1686
FDMW40*150*2	13-25	15	22	1500	2600*1200*1686

XMS Series Wheat Washing Machine:

XMS Series Wheat Washing Machine is a key device for wheat cleaning in grain processing. It uses water to remove sand, dirt, and pesticide residues on wheat kernels, showing good impurity - removal performance. It mainly includes a washing tank and a spin dryer, with auxiliary feeding, transmission, drainage, sand - discharge, and ventilation units. This equipment suits medium - and small - scale flour mills.

XMS系列洗麦机:

洗麦机是粮食加工过程中精选小麦的主要设备之一。本设备利用水洗方法来清除小麦中砂石、麦粒表面的污物和农药残留等，对小麦去杂具有良好的性能。本机主要由洗麦水箱与甩干器两部分组成，附有送料、传动、排水、排砂、通风等辅助装置。本设备适用于中、小型面粉厂。



参数Parameter 型号Model	产量 Output (t/h)	动力 Power (kw)	主轴转速 Shaft speed (r/min)	机重 Weight (kg)	外形尺寸 Dimension (mm)
XMS30	0.6	1.5	720	260	1560*480*1340
XMS40	1	3+1.1	750	500	1880*790*710
XMS50	2	4+1.1	600	900	2400*900*710
XMS60	3	5.5+1.1	550	1200	2800*1100*1850
XMS80	5	7.5+1.1	470	1500	3050*1200*2040

FMFQ Series Compound Mill:

FMFQ Series Compound Mill is a key wheat - grinding device in grain processing. It features a fully pneumatic system to control grinding - roll engagement and disengagement, along with a pneumatic friction - disc clutch. Equipped with a sensitive mechanical sensor and a servo - feeding system, it automatically adjusts the feeding - door opening based on material - flow rate changes.

FMFQ系列复式磨粉机:

磨粉机是粮食加工过程中研磨小麦的主要设备之一。全气压自动控制磨辊离合闸和气动摩擦片式离合器，并配有灵敏的机械传感装置和伺服喂料系统，喂料门的开口大小可随物料流量的变化而自动调节。



参数Parameter 模型Model	磨辊 Roller (D*L) (mm)	快慢辊速比 Roll speed ratio	快辊转速 Fast roller speed (r/min.)	喂料辊直径 Feeding roller diameter (mm)	动力 Power (KW)
FMFQ600	250*600	adjustable	500-600	φ75	7.5-15
FMFQ800	250*800	adjustable	500-600	φ75	11-22
FMFQ1000	250*1000	adjustable	500-600	φ75	15-30





Rasper:

This machine is motor - driven. The motor, via a pulley, rotates the drum at high speed. Fresh potatoes enter the machine from the hopper and are crushed in the high - speed rotating drum. Subsequently, the materials are transformed into potato paste. The paste flows into the sump through sieve holes and is then pumped to the next process.

锉磨机:

本机由电机通过皮带轮带动滚筒高速旋转,当鲜薯从料斗进入机内时,高速旋转的滚筒中镶嵌的锯条对鲜薯进行刨削,使鲜薯变成薯糊,通过筛孔薯糊进入料池,由泵送入下道工序。



类别Item	型号Model	CM8435	CM8450	CM1070
主轴转速main shaft speed(r/min)		2100	2100	1470
转鼓直径drum diameter(mm)		φ840	φ840	φ1100
转鼓宽度drum width(mm)		350	500	700
动力power(kw)		110	160	250
处理量capacity(t/h)		20-23	30-33	40-45
重量weight(kg)		2700	3800	4200
尺寸Dimension(mm)		2170*1306*1190	2170*1395*1190	3000*1490*1500



Centrifuge Sieve:

Centrifugal sieve is a professional extraction equipment used in potato starch processing, which is applied to washing and dehydration separation of starch slurry. It is mainly used in various starch factories that produce sweet potato starch, cassava starch, potato starch, wheat starch, pea starch, etc.

离心筛:

离心筛是针对薯类淀粉加工的专业提取设备,用于淀粉浆的洗涤和脱水分离。主要应用于红薯淀粉、木薯淀粉、马铃薯淀粉、小麦淀粉、豌豆淀粉等淀粉厂。



型号Model	参数Parameter	筛篮直径 Sieve basket (mm)	动力 Power (kw)	主轴转速 Shaft speed (r/min)	重量 Weight (kg)	尺寸 Dimension (mm)
DXSW100		1000	22/30/37	900-1200	1800	1350*2000*2200
DXSW85		850	18.5/22/30/37	1200-1460	1500	1200*1900*2100
DXSW80		800	11/15/30	900-1460	1200	1200*1700*1650



Hydrocyclones:

The hydrocyclone is a common separation and classification equipment, which commonly uses the principle of centrifugal sedimentation. Due to the particle size difference between coarse particles and fine particles, the magnitudes of the centrifugal force, centripetal buoyancy force, fluid drag force, etc. acting on them are different. Under the action of centrifugal sedimentation, most of the coarse particles are discharged through the underflow port of the hydrocyclone, while most of the fine particles are discharged through the overflow pipe, thus achieving separation and classification.

旋流器:

旋流器是一种常见的分离分级设备,常用离心沉降原理。由于粗颗粒与细颗粒之间存在粒度差,其受到离心力、向心浮力、流体曳力等大小不同,受离心沉降作用,大部分粗颗粒经旋流器底流口排出,而大部分细颗粒由溢流管排出,从而达到分离分级。



型号Model	参数Parameter	Unit Output (t/h)	重量 Weight (t)	动力 Power (kw)
XM-362		3-8t	0.3吨/级 0.3t/stage	7.5-30kw/stage
XM-438		3-8t		
XM-516		3-8t		

